

## BACKGROUND

- The International Diabetes Federation (IDF) **North America and Caribbean Region (NAC)** consist of the **USA, Mexico and Canada**, as well as 25 **Caribbean countries and territories**.
- Diabetes is a serious and increasing global epidemic.
- Accurate estimates are essential for more efficient allocation of resources.

## AIM

- To provide estimates on people (18-99 years) living with diabetes in the IDF NAC Region.

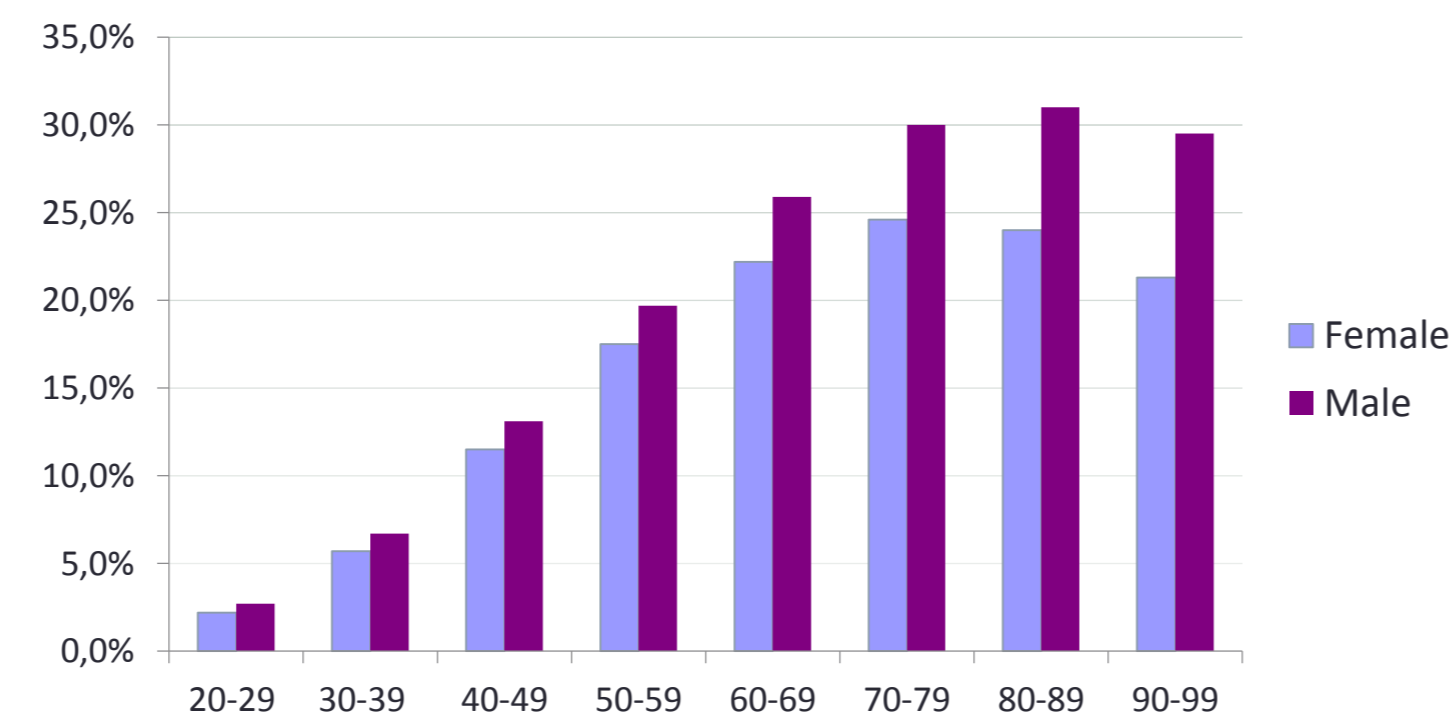
## METHODS

- Population-based high-quality data sources containing diabetes prevalence were used to estimate age and gender specific diabetes prevalence for each country in 2017.
- Extrapolations were calculated for countries without good quality data based on similar geography, economics and ethnicity.
- The UN population projections for 2045 were used to project diabetes prevalence in 2045 for each country.
- Estimates for diabetes in adults were taken from 24 data sources in the IDF NAC region, representing 14 out of 28 countries.
- The details of the methodology were described in IDF Diabetes Atlas 8th Ed. (1) and in the paper of Cho et al. (2).

## RESULTS

- With **10,8%** diabetes prevalence (Table 1), NAC region is among the 2 IDF regions with the highest age-adjusted prevalence.
- Diabetes prevalence in 2017 is higher among males in all age groups (Figure 1).

**Figure 1: Diabetes prevalence in the IDF NAC region by age and gender, 2017**



- The number of people with diabetes is projected to increase **46% by 2045** and to reach **73 million** (Table 1).

**Table 1. Summary of the data on diabetes prevalence and projections in the IDF NAC region**

| IDF NAC region                                 | 2017        | 2045        |
|--|-------------|-------------|
| <b>Diabetes (18-99 years)</b>                  |             |             |
| Age-adjusted comparative prevalence            | 10.8%       | 10.8%       |
| Number of people with diabetes                 | 50 million  | 73 million  |
| Undiagnosed cases                              | 37.6%       | -           |
| <b>Health expenditure due to diabetes, USD</b> | 440 billion | 508 billion |

## RESULTS

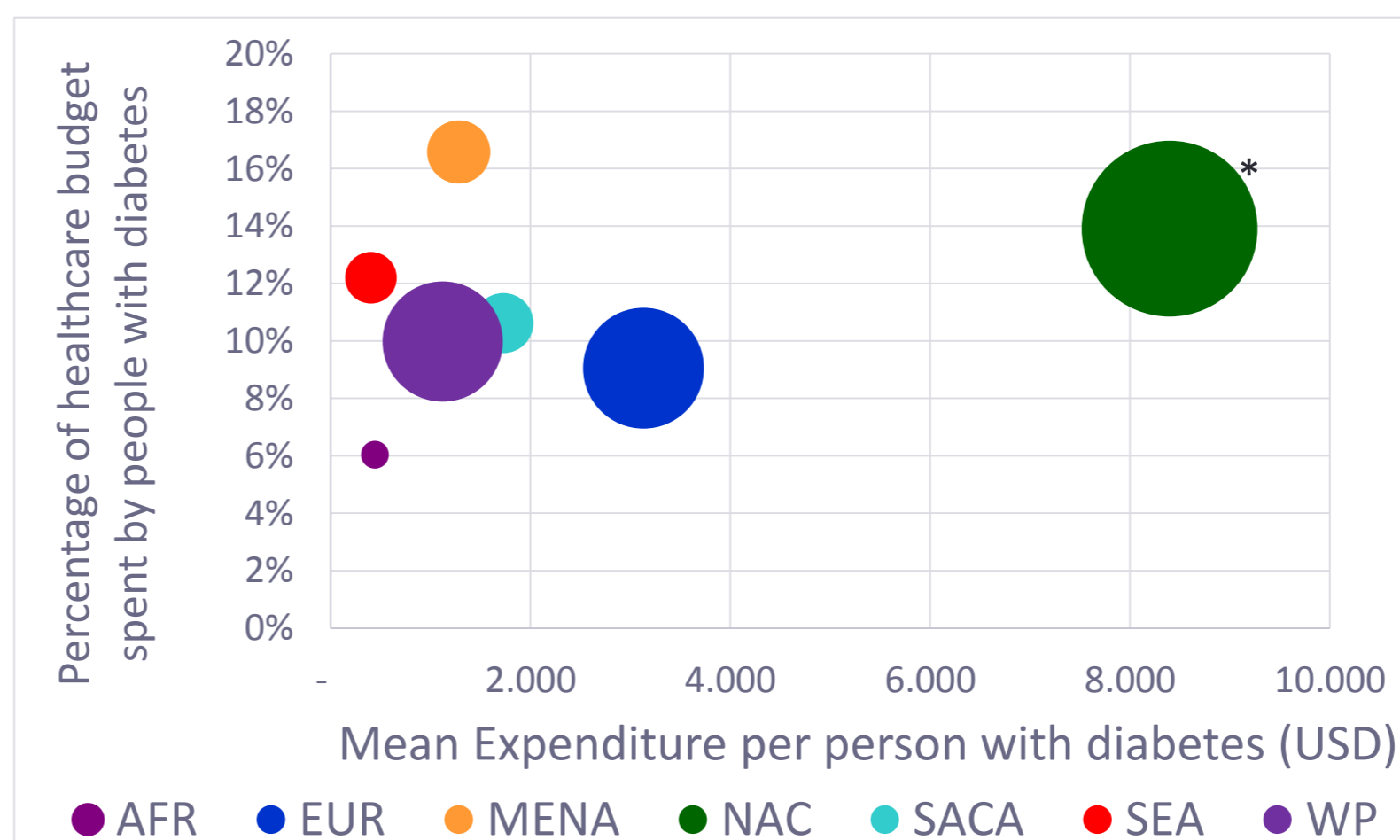
- The United States is the country with the highest number of people living with diabetes in IDF NAC region. (Table 2).

**Table 2. Top 5 countries for the number of people with diabetes**

| Country                  | Number of people with diabetes |
|--------------------------|--------------------------------|
| United States of America | 33,517,033                     |
| Mexico                   | 12,477,291                     |
| Canada                   | 2,950,176                      |
| Haiti                    | 372,541                        |
| Jamaica                  | 224,939                        |

- In relation to health expenditure, **USD 440 billion** were spent on treating diabetes in the NAC region, more than in all other regions combined (Figure 2).

**Figure 2: Percentage of health care spent by people with diabetes in the IDF regions, 2017**



\*The size of the bubbles represents the amount of health care expenditure

## CONCLUSIONS

- Diabetes exerts a heavy burden in this region.
- The 2017 estimates on total health care expenditures on diabetes confirm the large economic impact caused by diabetes on health systems.
- Efforts on optimizing diabetes primary and secondary prevention must be conducted in order to reduce the human and economic costs of diabetes for society.

### References:

- IDF Atlas, 8th Ed. Brussels, Belgium: International Diabetes Federation, 2017.
- Cho, N. H., Shaw, J. E., Karuranga, S., et al. (2018). IDF Diabetes Atlas: Global estimates of diabetes prevalence for 2017 and projections for 2045. *Diabetes research and clinical practice*, 138, 271-281.

**Acknowledgments :** IDF Diabetes Atlas Committee

**Conflict of Interest:** Receipt of grants or research support: IDF Diabetes Atlas has received support from Lilly Diabetes, MSD and Novo Nordisk

### Abbreviations of IDF regions:

- AFR: Africa
- EUR: Europe
- MENA : Middle East and North Africa
- NAC : North America and Caribbean
- SACA: South and Central America
- SEA: South East Asia
- WP: Western Pacific

**IDF Atlas website:** <http://www.diabetesatlas.org/>

